

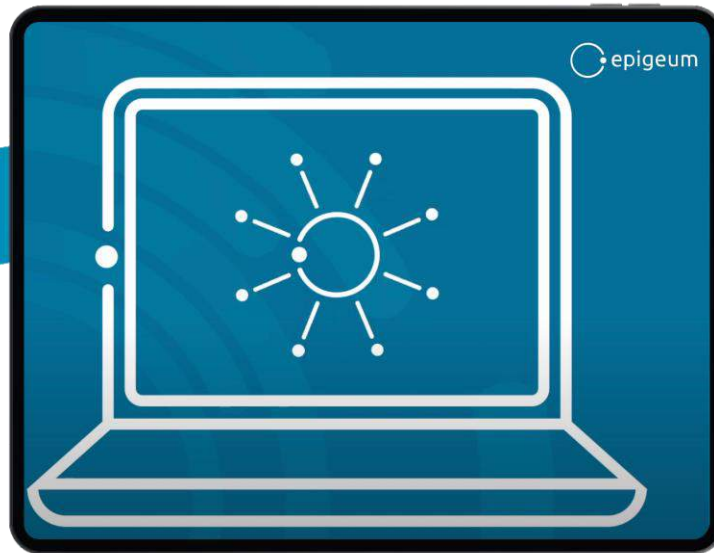


Responding to Disclosures of Sexual Violence 2.0

An introduction

About Epigeum

Founded at Imperial College London in 2005, Epigeum was acquired by Oxford University Press in 2015 and later by SAGE Publishing in 2023. We are a leading provider of interactive, online **courseware** for universities and colleges worldwide – making consistent, cost-effective training achievable for all.



Watch our [introductory video](#)

Epigeum Programmes

Epigeum programmes support the core activities of universities and colleges in three key areas. Evidence-based learning design, cutting-edge technology, and comprehensive subject knowledge ensure that each programme delivers training of the highest quality.

Research



Support and
Wellbeing



Studying





Epigeum Support and Wellbeing Programmes

Developed in collaboration with leading subject experts and practitioners, students, and higher education professionals, our Support and Wellbeing programmes help institutions to build **safe and supportive communities**.





Responding to Disclosures of Sexual Violence 2.0

- Developed in collaboration with expert advisors, authors and an expert panel of academics, and practitioners.
- Ensures university staff and student leaders are equipped with the practical knowledge and skills to provide a survivor-centred first response.
- The new edition has been updated so that the approach is more trauma-informed.





RDSV: Audience and Structure

Audience:

All student-facing staff at Higher Education Institutions and student leaders

Module 1: Setting the context

- Introduction to sexual violence
- Sexual violence: the Higher Education context
- Consent
- Normalisation
- Challenging myths and misconceptions of sexual violence
- Scenario: Recognising sexual violence

Module 2: Understanding and supporting survivors

- Barriers to disclosure and seeking support
- The impacts of sexual violence
- Creating a supportive space
- Providing a supportive response
- Scenario : Reacting to a disclosure

Module 3: Steps to take when responding

- Support options
- Reporting options
- The alleged perpetrator
- Preserving evidence
- Looking after yourself
- Scenario: Responding to a disclosure
- Course Summary



RDSV: Contributors

Lead advisor:
Professor Graham Towl



Author:
Clarissa Humphreys





RDSV: Expert Panel



Amy Thompson (she/her)



Katrina Daoud (she/her)



Professor Cara Aitchison



Mia Nembhard (she/her)



Dr Jane Meyrick (she/her)



Lisa Brooks-Lewis (she/her)



Emma Short (she/her)



Lesley Johnston (she/her)



Dr Emer Clifford (she/her)



RDSV: Key Benefits for institutions

- Ensure staff are confident in responding to disclosures
- Provide consistent training across different staff roles and departments
- Enable your institution to provide a flexible learning resource
- Support a blended approach to learning
- Offer cost-effective, scalable training resource across your institution, developed in collaboration with experts
- Implement an online 'safe space' to explore the issues first responders face, without fear of harm through an inappropriate response



RDSV: Key Benefits for learners

- Raise awareness of sexual harassment, sexual violence and gender-based violence and the associated impact
- Gain the practical knowledge and skills to effectively provide support
- Confidently signpost to sources of further support
- Promote a safer university community



RDSV: Key Updates

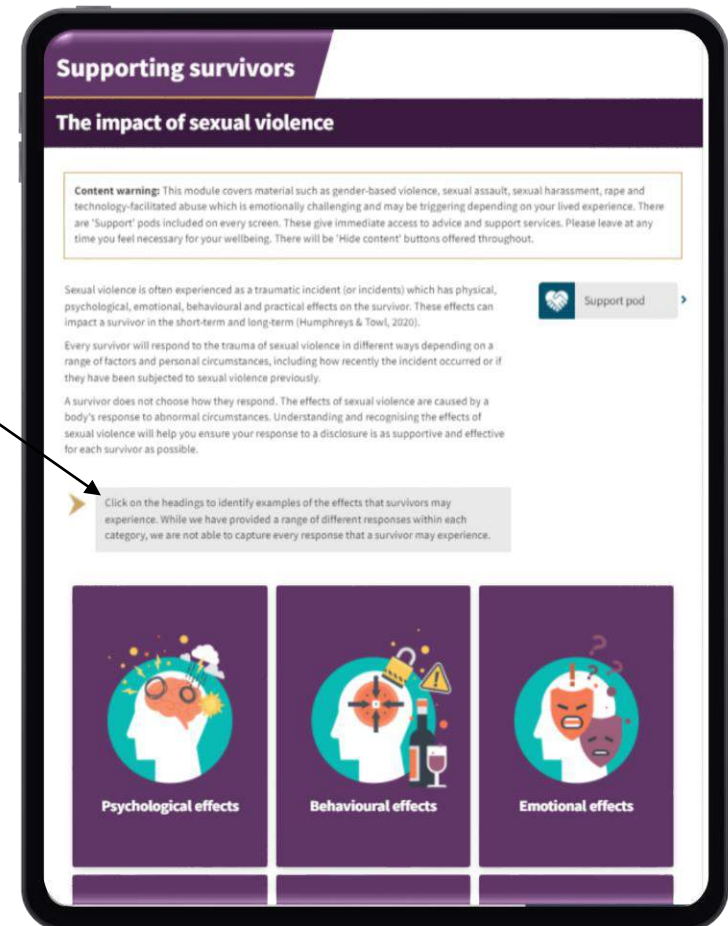
Responding to Disclosures of Sexual Violence 2.0 has been updated based on feedback on the original course and market research. There are five key aspects of the course that will be updated for the new edition:

- **Structure:** There will be three core modules in the new edition
- **Length:** The length of the course has been streamlined to 90 minutes
- **Diversity:** The content has been updated to be more inclusive of all learners and have more mindful representation of a diverse range of individuals and inclusive scenarios
- **Intersectionality:** Discussion of and attention to intersectionality when receiving a disclosure and providing support has been added
- **Design:** The design has been updated to provide the course with a fresh feel



Module 1: Setting the Context

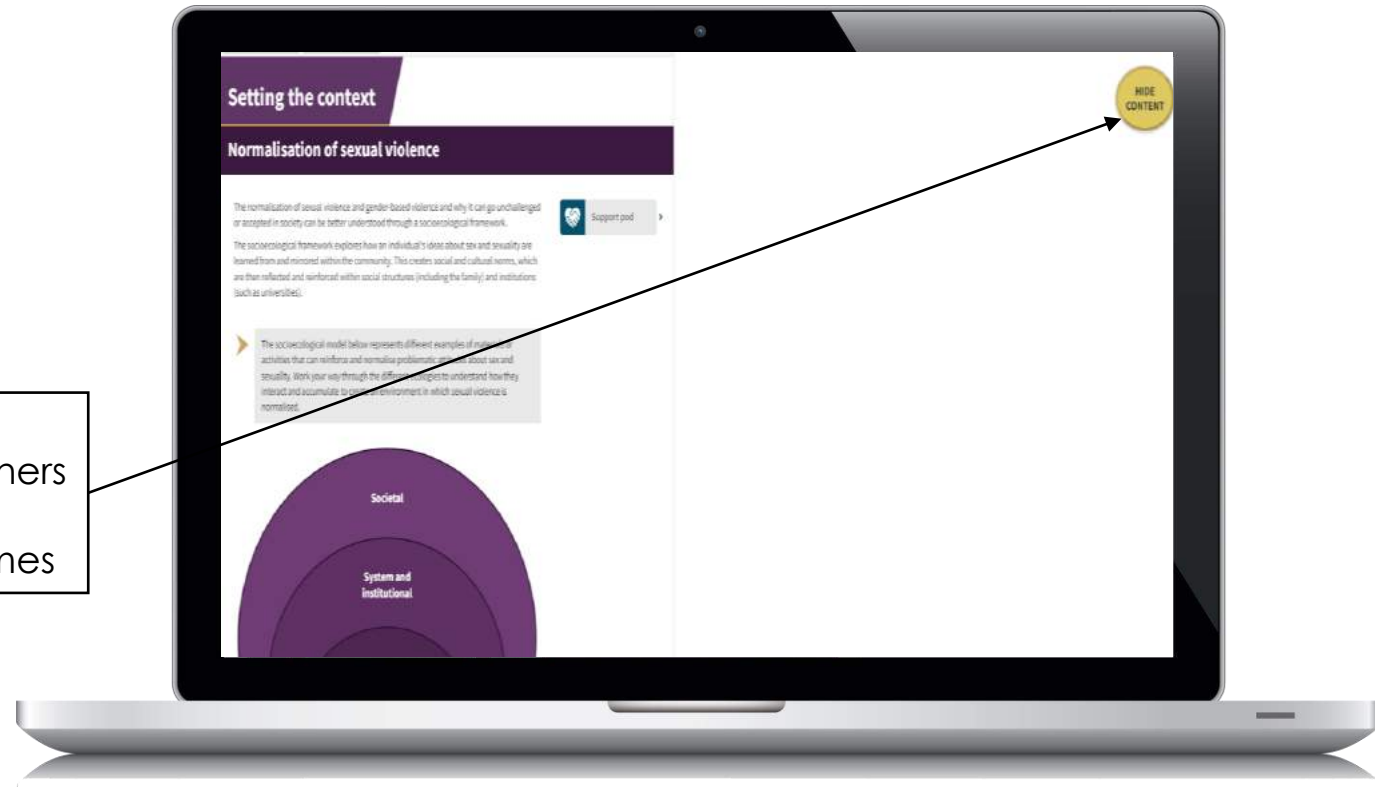
Interactive diagrams present complex concepts clearly and accessibly – facilitating an active learning approach





Module 1: Setting the Context

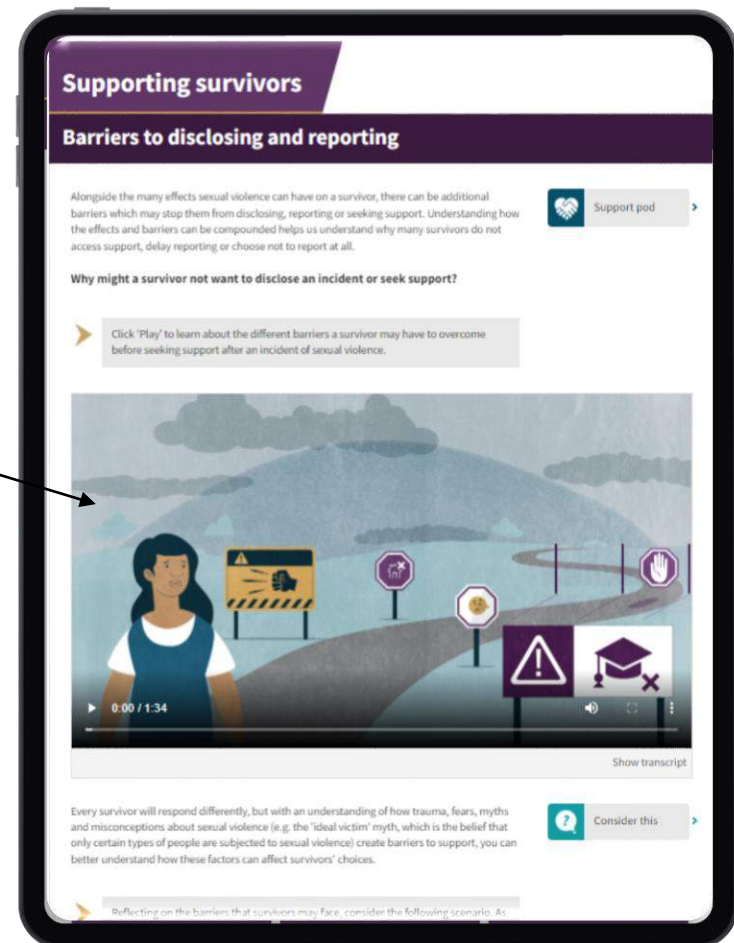
'Hide content' button on each screen to help Learners navigate modules with potentially triggering themes





Module 2: Understanding and Supporting Survivors

Varied activities deepen understanding and prompt reflection and discussion



Supporting survivors

Barriers to disclosing and reporting

Alongside the many effects sexual violence can have on a survivor, there can be additional barriers which may stop them from disclosing, reporting or seeking support. Understanding how the effects and barriers can be compounded helps us understand why many survivors do not access support, delay reporting or choose not to report at all.

Why might a survivor not want to disclose an incident or seek support?

Click 'Play' to learn about the different barriers a survivor may have to overcome before seeking support after an incident of sexual violence.

0:00 / 1:34

Show transcript

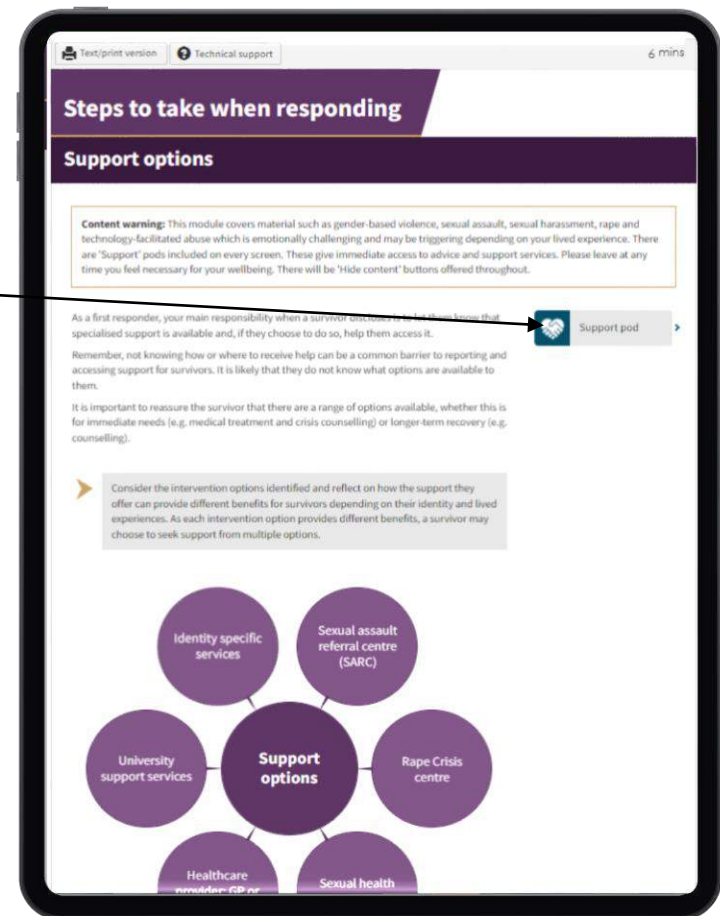
Every survivor will respond differently, but with an understanding of how trauma, fears, myths and misconceptions about sexual violence (e.g. the 'ideal victim' myth, which is the belief that only certain types of people are subjected to sexual violence) create barriers to support, you can better understand how these factors can affect survivors' choices.

Reflecting on the barriers that survivors may face, consider the following scenario. As



Module 3: Steps to take when responding

'Support' pods contain information and links signposting the Learner to support resources





Ongoing Support and Implementation

- However you choose to deliver *Responding to Disclosures of Sexual Violence*, we will provide onboarding and technical support every step of the way,
- The programme can be hosted on Epigeum's Courses Platform or through your VLE/LMS. Our team will support you throughout either option.
- Utilise administrator reporting functions to explore how your staff and students are responding to the course
- Drive student and staff engagement via a suite of print and digital promotional resources, included in your 'Asset Pack'
- Request technical support via our dedicated web form: <https://www.epigeum.com/epigeum-technical-support/>





Visit our website for more details on *Responding to Disclosures of Sexual Violence*:

www.epigeum.com/courses/support-wellbeing/responding-to-disclosures-of-sexual-violence-2-0/